



North Carolina Ports

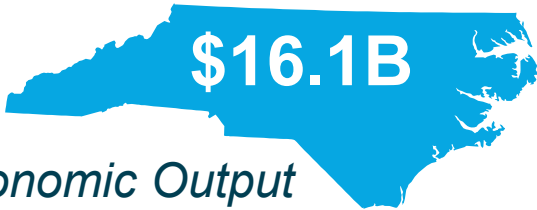
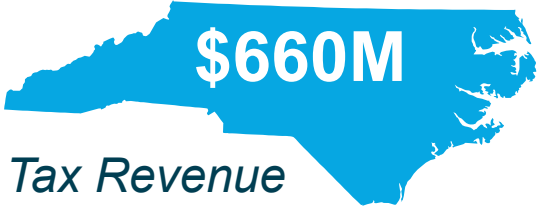
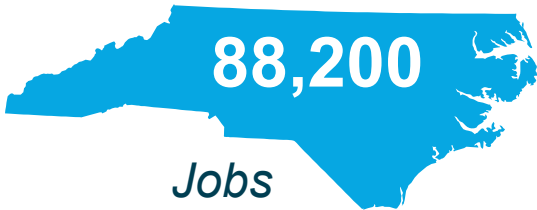
Cape Fear RPO Board
June 14, 2024

North Carolina Ports Overview

- Two deep water ports in Wilmington and Morehead City, as well as an inland port in Charlotte
- Terminal facilities serve container, bulk, breakbulk and ro/ro operations
- Strategically located on the East Coast within 700 miles of 70% of the U.S. industrial base



Ports Support North Carolina



2022 Economic Contribution of the North Carolina Ports
Institute for Transportation Research and Education,
N.C. State University

Defining Performance Excellence

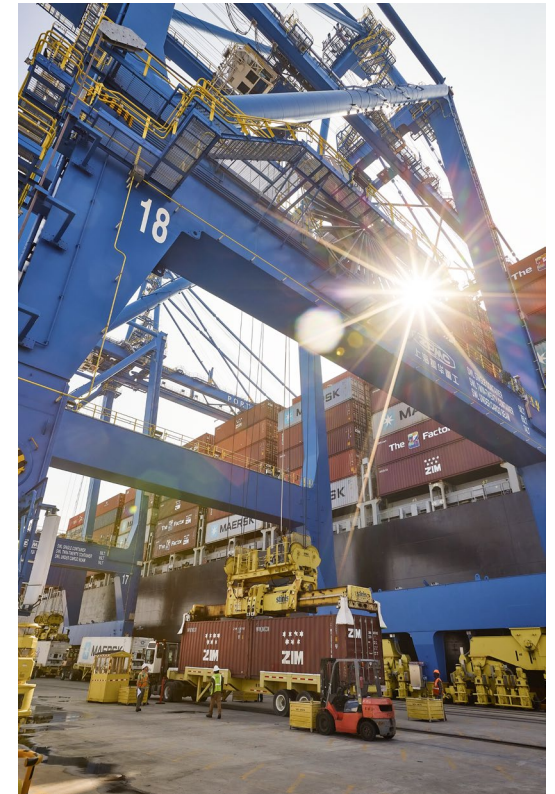
2022 Container Port Performance Index (CPPI)

(World Bank and S&P Global Market Intelligence)

- **#1** North America
 - **#44** Globally (out of 348 ports)
-

Metrics Driven

- Vessel productivity – **39** net moves per hour
- Gate productivity
 - Single turn – **21** minutes
 - Dual turn – **31** minutes





Infrastructure

Wilmington Capital Improvements

Infrastructure Improvement Plan	
Project	Status
Berth Expansion	Complete
212' Air Draft Clearance	Complete
3 Neo-Panamax Cranes	Complete
Turning Basin Expansion – Phase II	Complete
Container Yard Expansion Master Plan	In Progress
Refrigerated Container Yard Expansion	Phase I Complete Phase II Complete
Gate Complex + Terminal and Gate Operating Systems + Customer Access Portal + Chassis Yard	Complete
Wilmington Harbor Navigation Improvement Project	Conditionally Authorized
Intermodal Rail Yard	In Progress
New North Gate	In Progress
North Property Rail Storage	In Progress



Refrigerated Container Yard



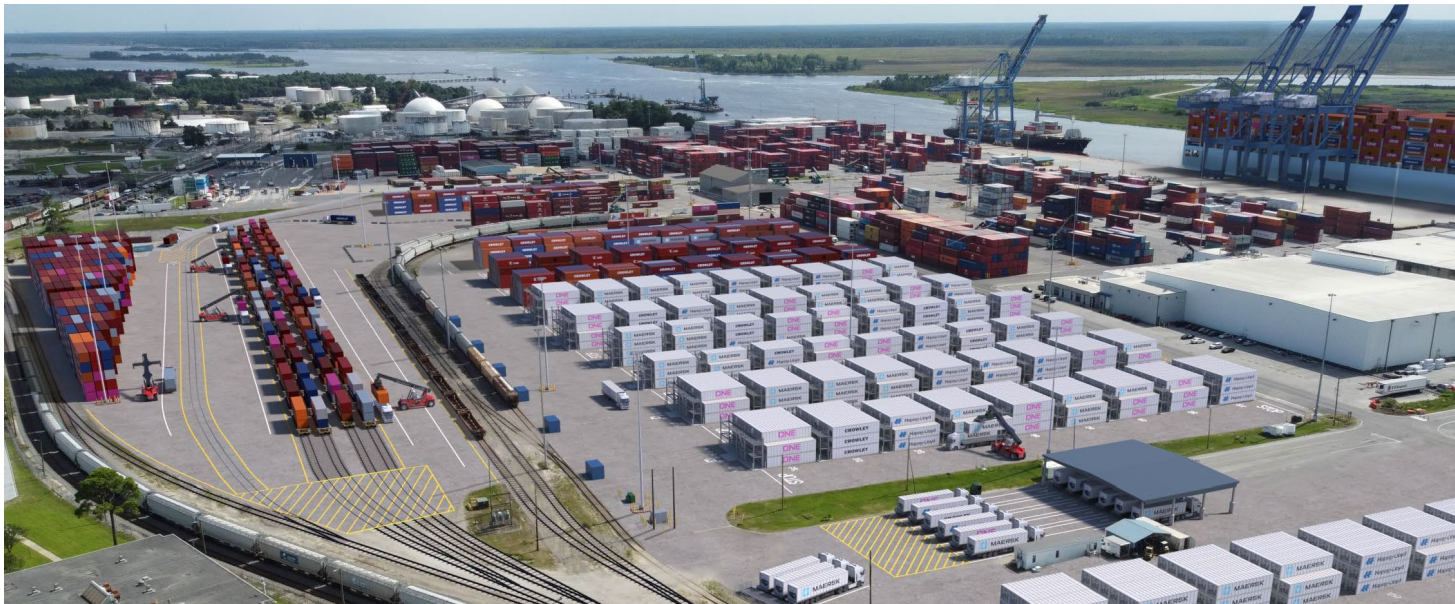
Project Details

- Completion of Phase 2 brings reefer plug total to more than 1,500

Intermodal Rail Yard

Project Details

- Construction to begin in March 2024
- Will provide four new working tracks totaling 5,000 linear feet
- Project completion will increase capacity to 50,000 intermodal rail movements annually



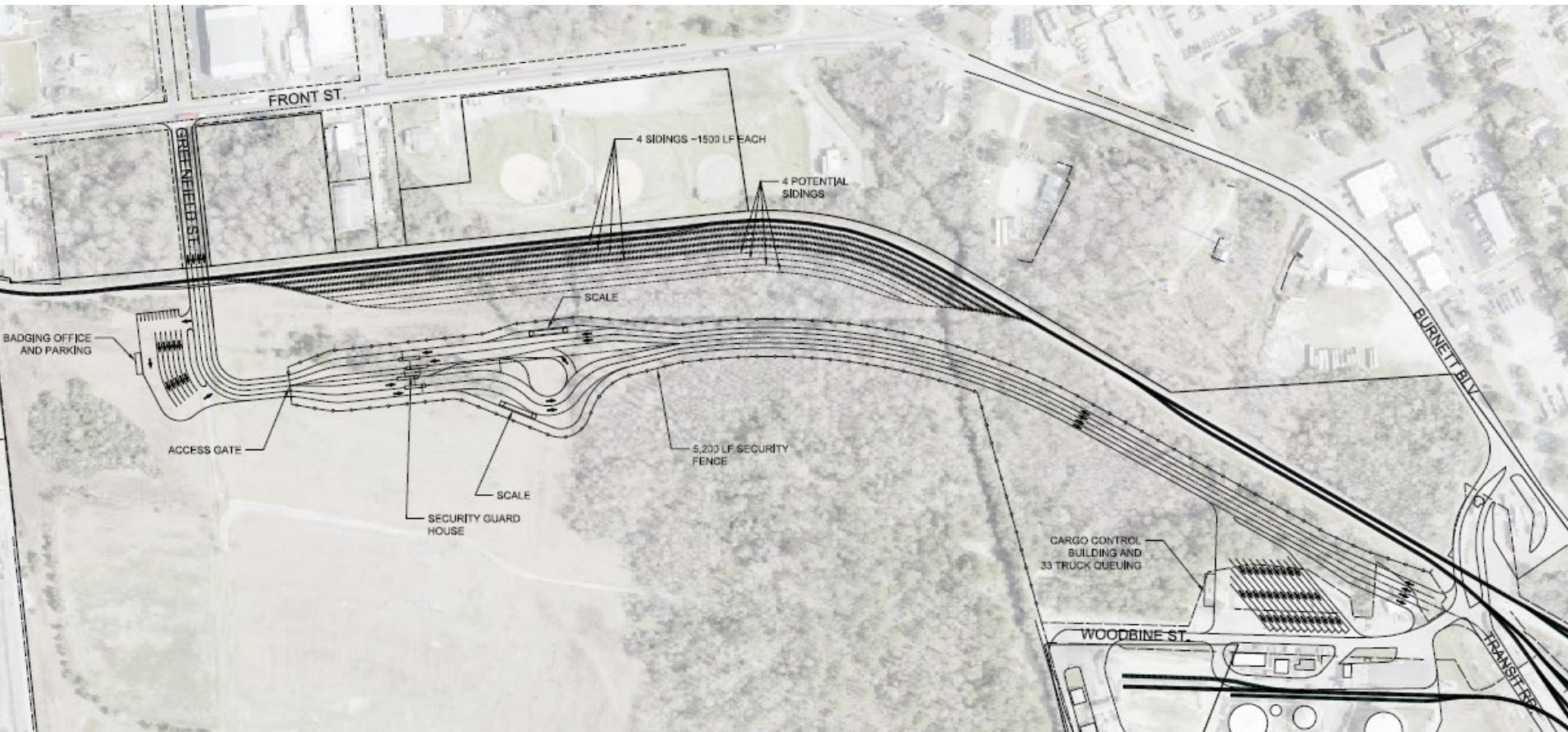
New North Gate & North Property Rail Storage

New North Gate

- Construct a new port entrance for General Cargo
- Close the gap of the first/last mile for trucks
- Eliminate truck delays and congestion at a very active railroad crossing and take trucks off neighborhood surface streets
- Project includes:
 - 4,000 feet of elevated bi-directional roadway
 - New security checkpoint
 - Truck queuing and cargo control area
 - Badging office with EV charging infrastructure
 - State of the art gate and terminal technology integration

North Property Rail Storage

- 6,000 linear feet rail storage track





Carrier Services & Inland Reach

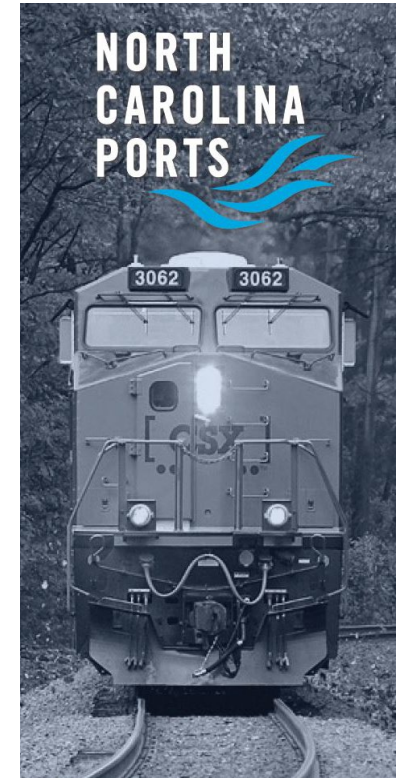
Ocean Carrier Coverage

- **Asia**
 - Qingdao, Yantian, Ningbo, Shanghai, Busan, Singapore, Xiamen
- **Europe**
 - Antwerp, Southampton, Cork
- **Central America, Caribbean & South America**
 - Mariel, Santo Tomas, Puerto Cortes, Cartagena, Turbo, Manzanillo, Puerto Moin, Puerto Barrios, Managua, San Salvador



Queen City Express

- Provides direct rail service moving double-stacked containers between the Port of Wilmington and Charlotte
- **Advantages:**
 - Lower transportation costs
 - Shortest direct rail service connecting Greater Charlotte Region
 - Shortens first and last mile transit
 - Reduces emissions
 - No dwell time at Port of Wilmington or Charlotte Inland Port (CIP)
 - Flexible staging and easy access at CIP



Wilmington Midwest Express

- Operated by CSX via Rocky Mount, NC Carolina Connector Intermodal Rail Facility
- Competitive rates, combined with no port congestion and no rail dwell making it the fastest ship-to-rail service on the East Coast



Import		
Chicago	→	5 days
NW Ohio	→	5 days
St. Louis	→	7 days

Export		
Chicago	→	4 days
NW Ohio	→	4 days
St. Louis	→	6 days

Looking Toward the Future

- Continued growth of cargo volumes
- Expand the global coverage of vessel services
- Engage and support state-wide economic development projects
- Develop the talent pipeline
- Build the NC Ports brand



2202 Burnett Blvd., Wilmington, NC 28401 | 800-334-0682 | ncports.com