

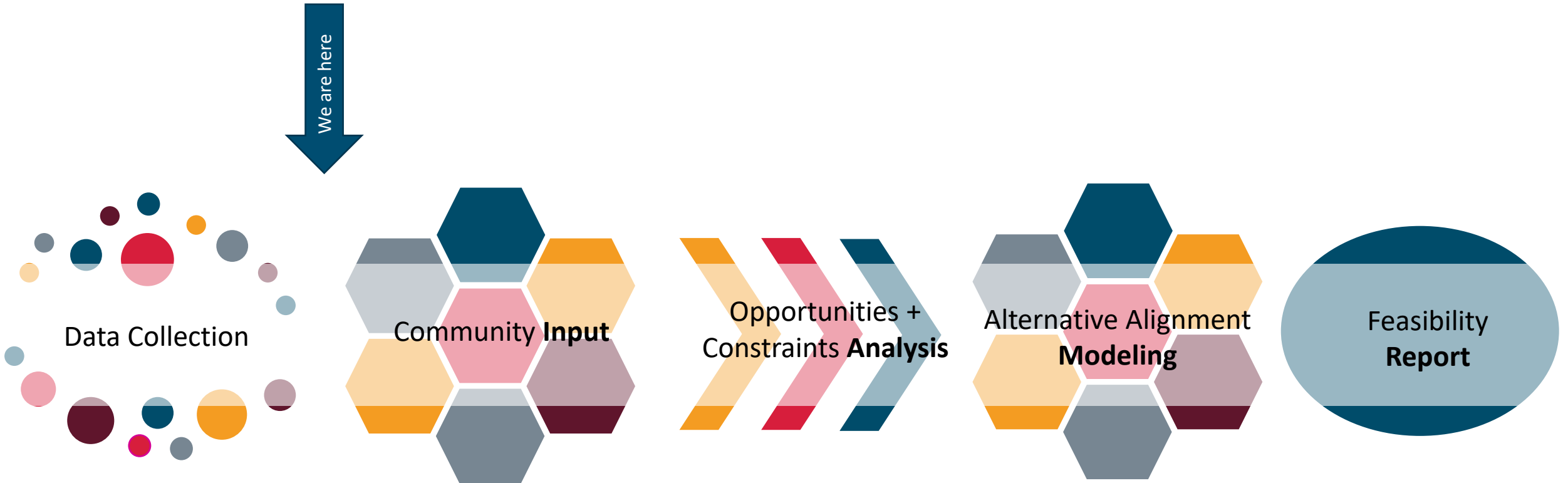
A photograph of a colorful storefront, likely a boutique or gift shop. The building has a mix of red brick and bright, painted sections in shades of green, yellow, and blue. A large, ornate pink wooden bench sits on the sidewalk in front of the entrance. To the right of the bench is a white swan sculpture. The storefront features large glass windows and doors with various signs and decorations, including a sign that says "DOG" and another that says "VEGETABLES". The sidewalk is paved with concrete, and there are trees and other buildings visible in the background.

# CAPE FEAR COG



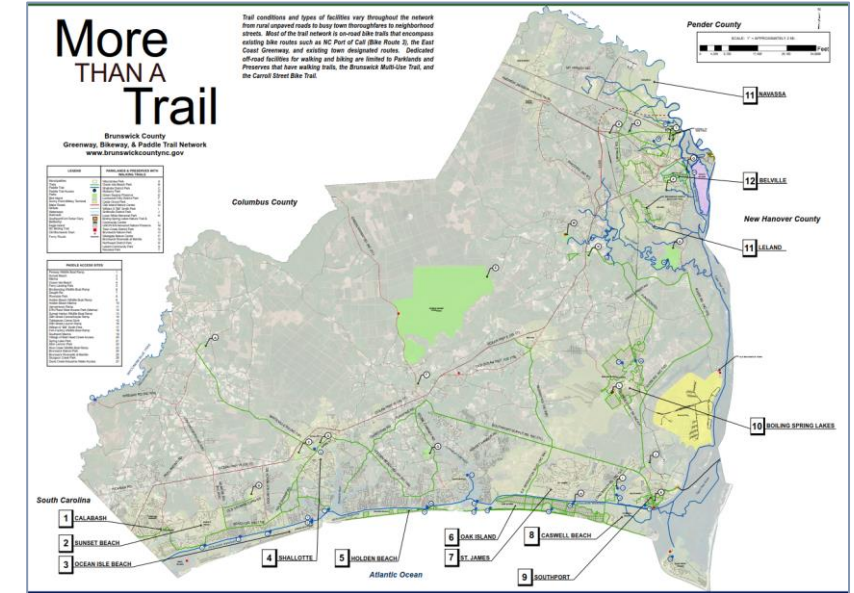
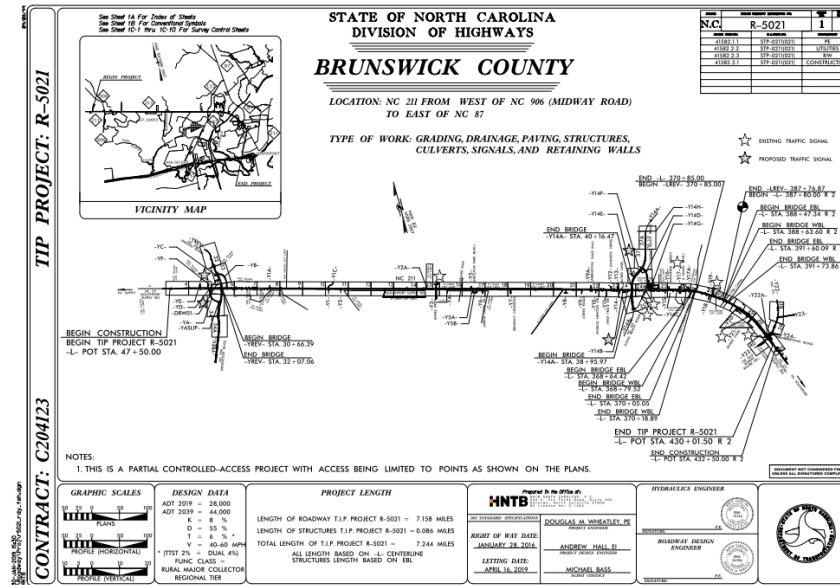
NC 211 Biking and Walking Facility Feasibility Study: Project Update

06/03/2020





## Data Collection



## Keys to Great Input

- › Build on Previous Plans
- › Active Community Outreach
- › Tap into Existing Networks
- › Clearly Articulate Community Guidance





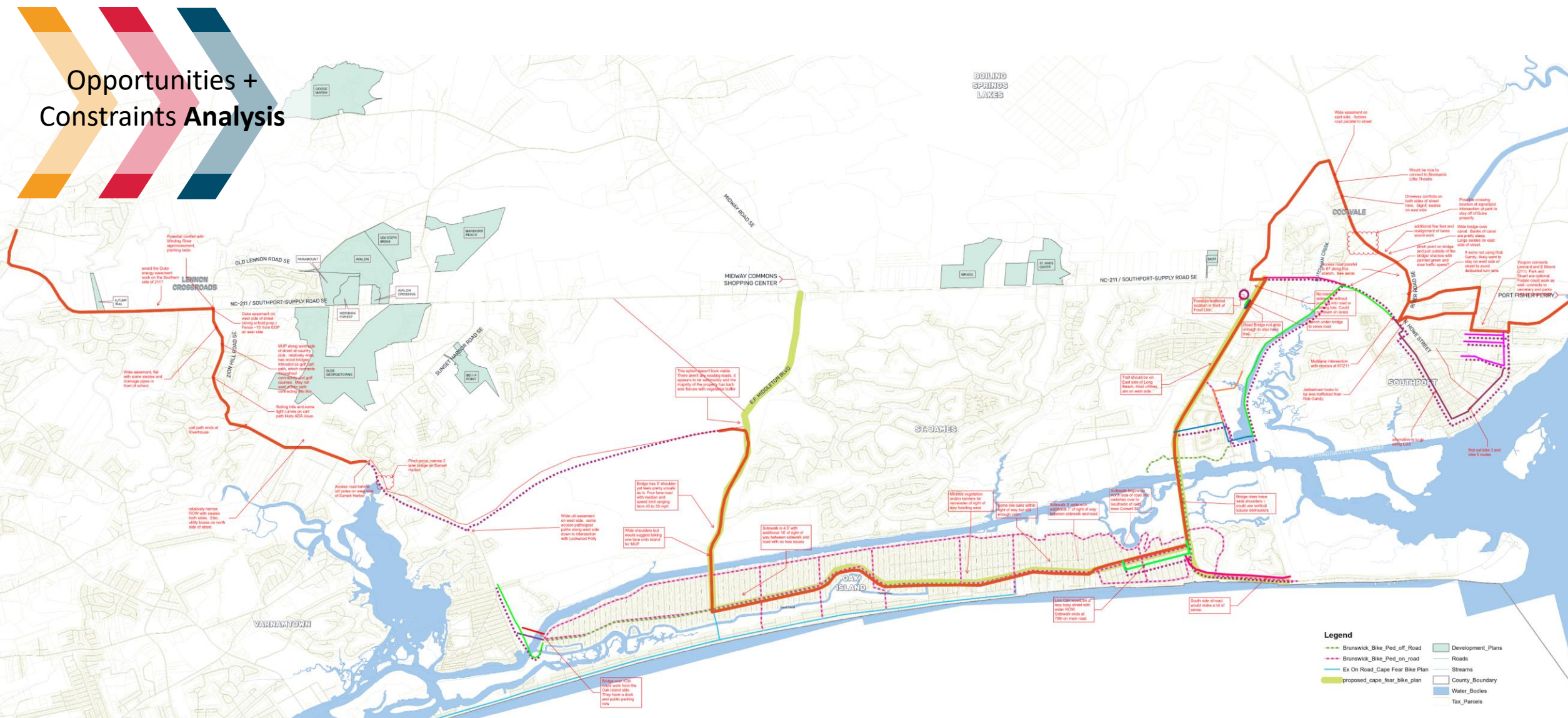


## Keys to Great Analysis

- > Thorough Data Collection
- > Time in the Field
- > Understanding Design Implications

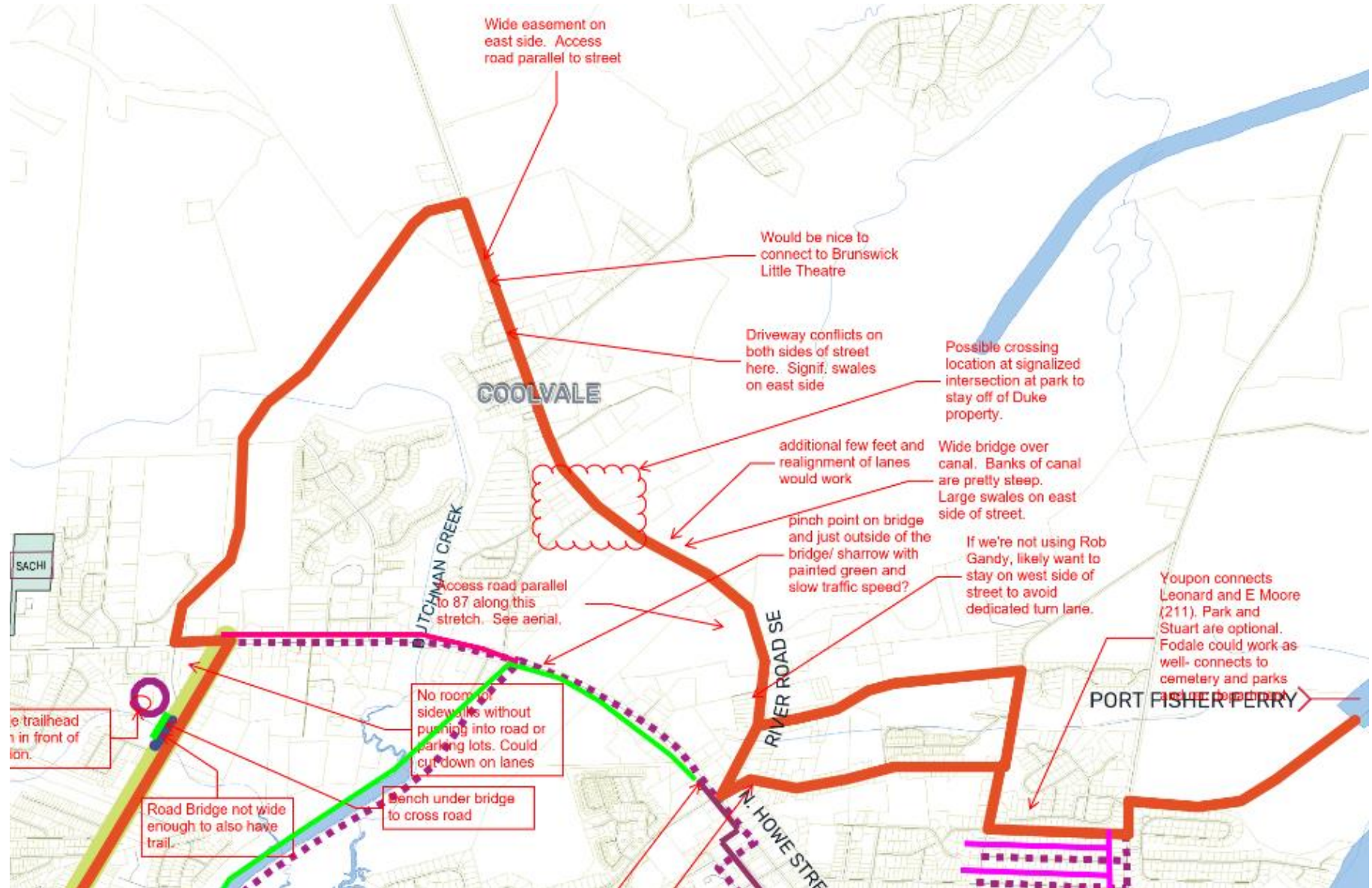


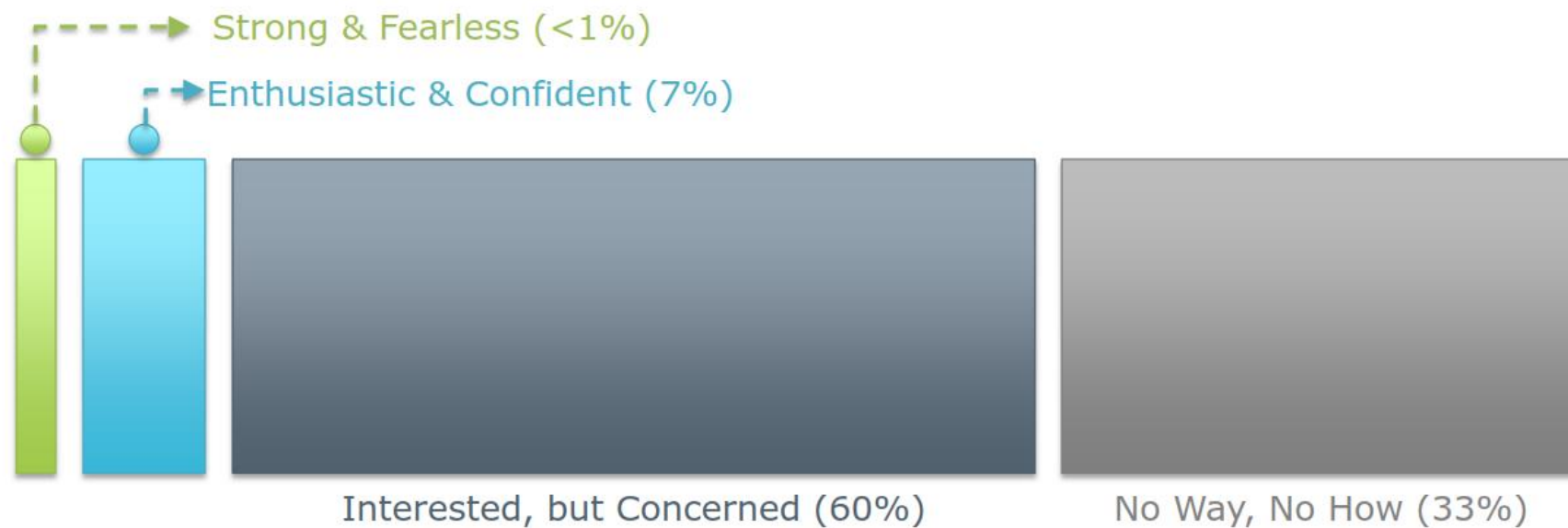
## Opportunities + Constraints Analysis





## Opportunities + Constraints Analysis





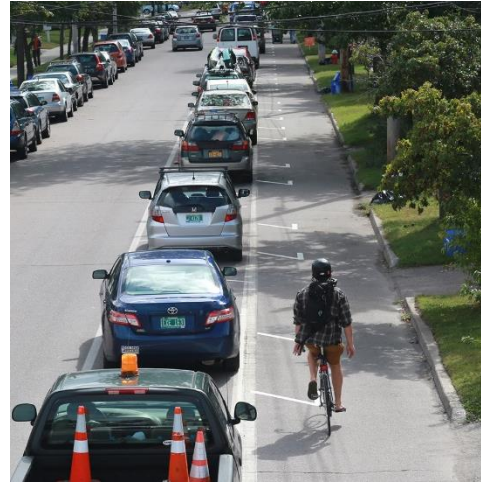




Greenways



Multi-Use Paths



Protected Bike Lanes



Buffered Bike Lanes



Bike Lanes & Sidewalks

Most Protected

Least Protected





## Public Engagement Next Steps

- › Video Presentation
- › Online Survey
- › Stakeholder Meeting

<https://www.surveymonkey.com/r/nc211bikeped>

## Key Questions

- › How do residents and visitors want to use a future NC-211 facility?
- › How often?
- › Key destinations?
- › Challenges for the project to address?



Thank you!