



CAPE FEAR COG

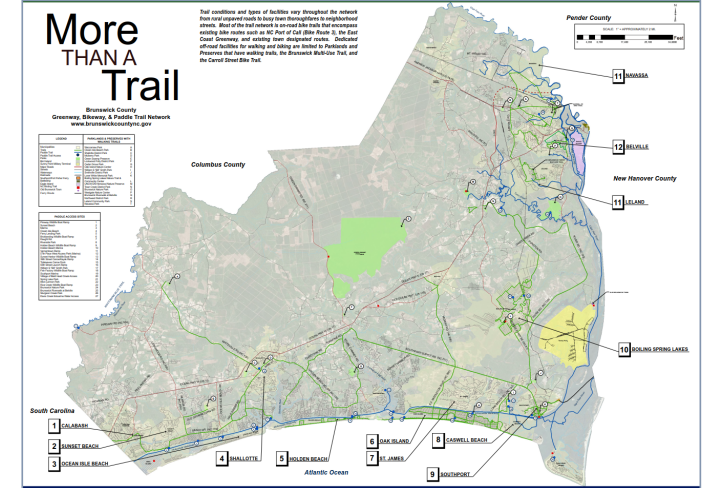
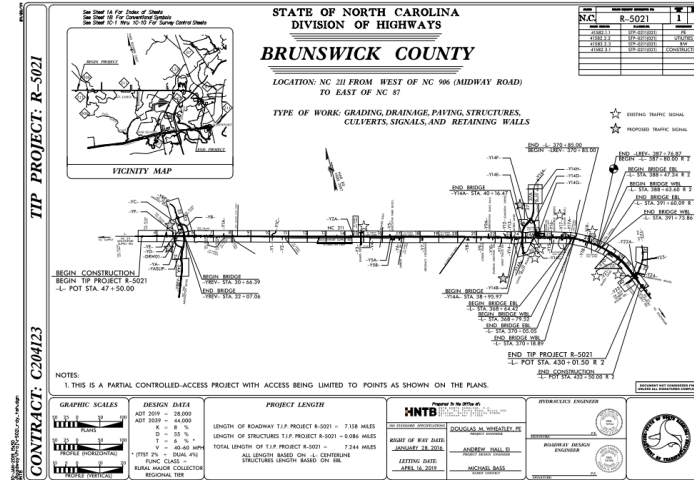


NC 211 Biking and Walking Facility Feasibility Study: Project Update

06/03/2020



Data Collection



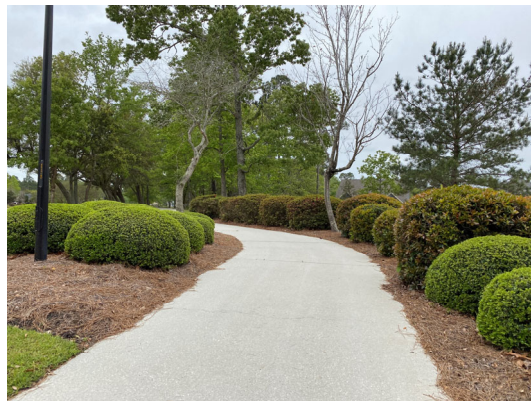
Keys to Great Input

- › Build on Previous Plans
- › Active Community Outreach
- › Tap into Existing Networks
- › Clearly Articulate Community Guidance





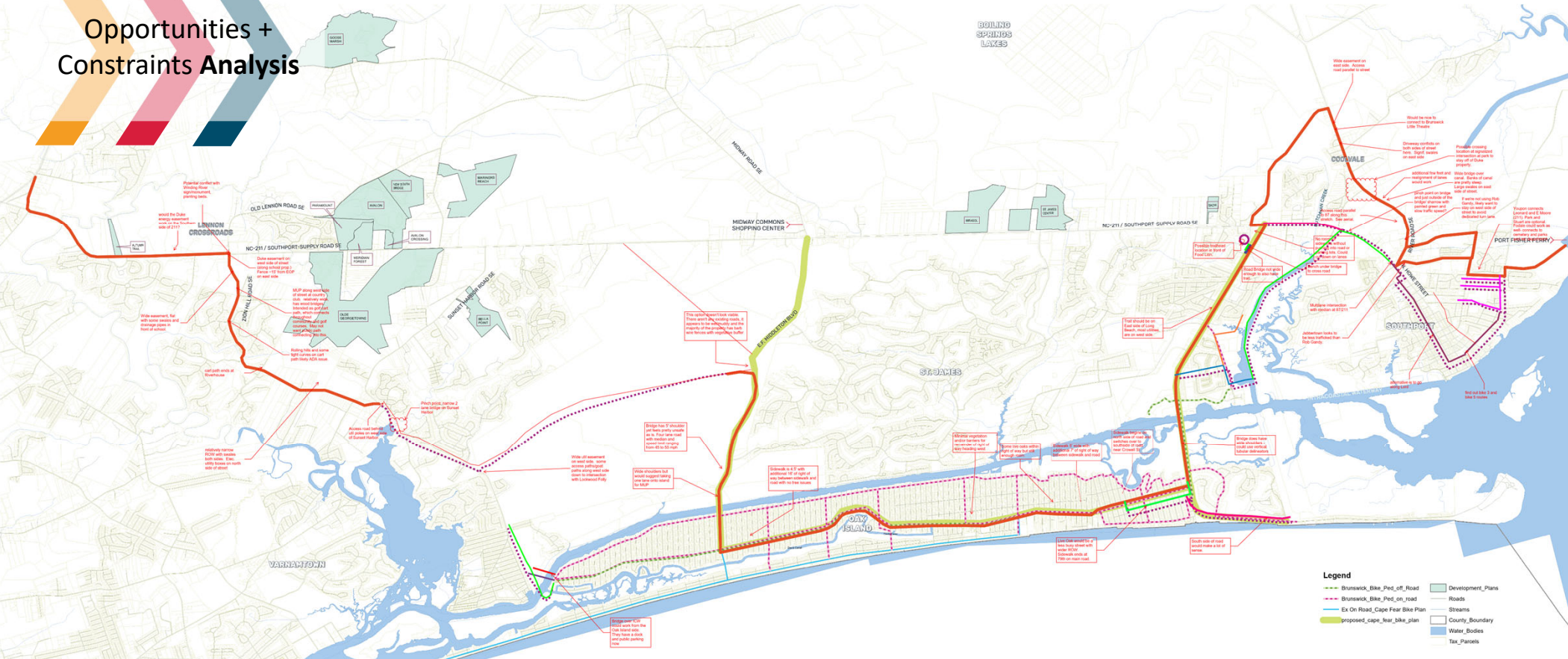
Data Collection



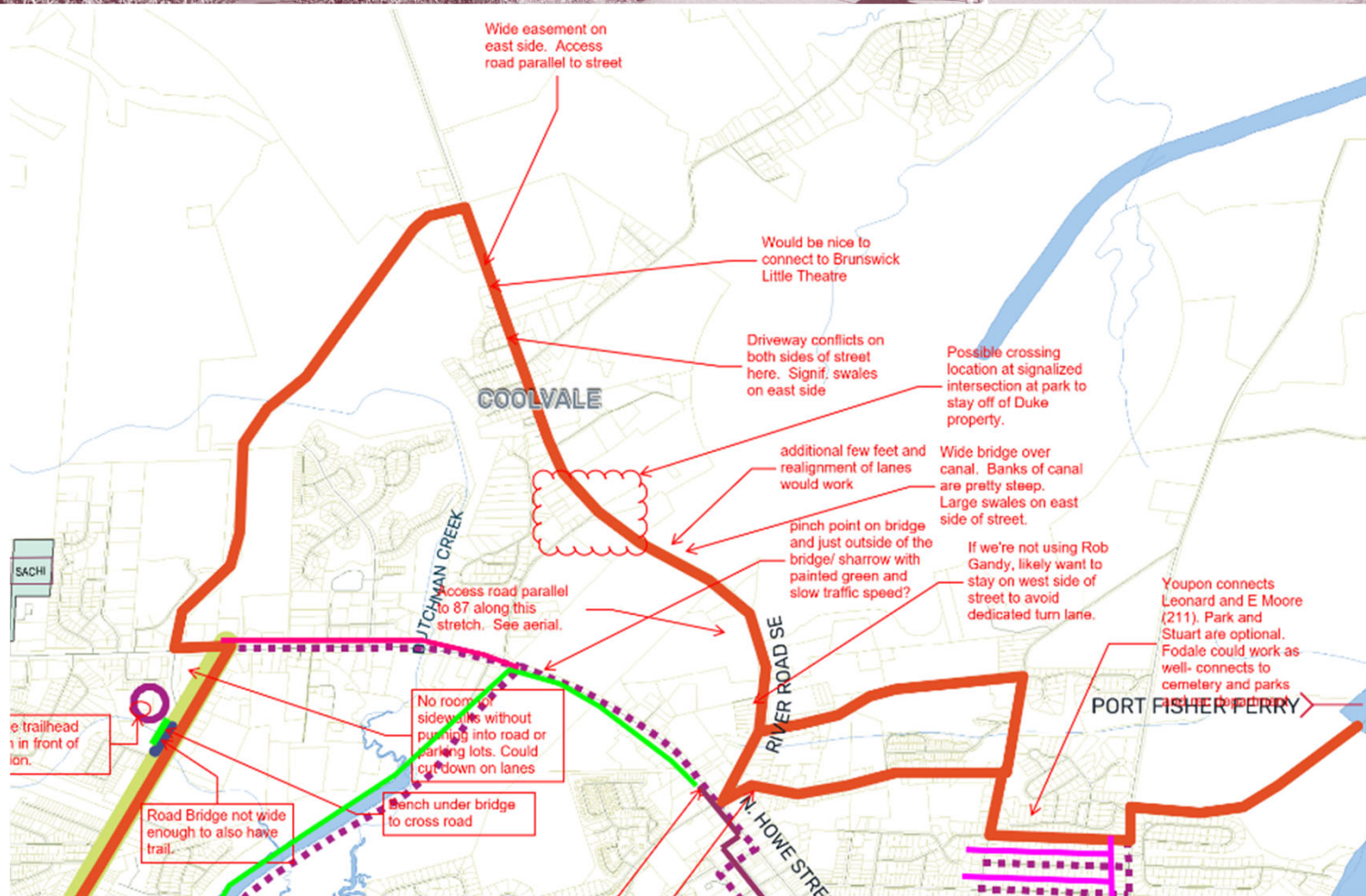
Keys to Great Analysis

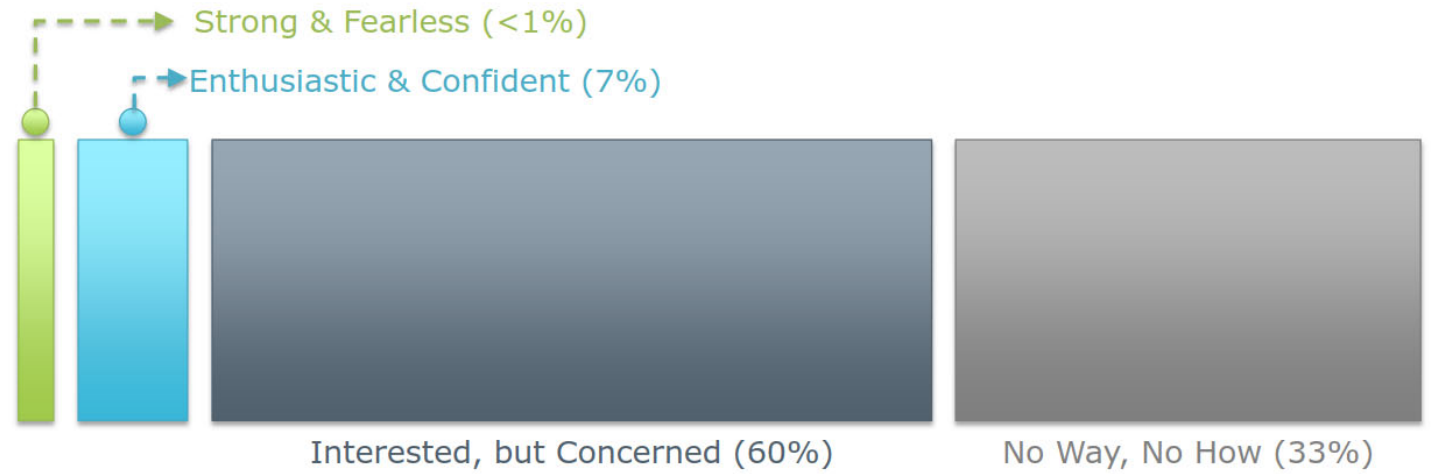
- › Thorough Data Collection
- › Time in the Field
- › Understanding Design Implications

Opportunities + Constraints Analysis



Opportunities +
Constraints Analysis







Greenways



Multi-Use Paths



Protected Bike Lanes



Buffered Bike Lanes



Bike Lanes & Sidewalks

Most Protected

Least Protected



Public Engagement Next Steps

- › Video Presentation
- › Online Survey
- › Stakeholder Meeting

<https://www.surveymonkey.com/r/nc211bikeped>

Key Questions

- › How do residents and visitors want to use a future NC-211 facility?
- › How often?
- › Key destinations?
- › Challenges for the project to address?

Thank you!